

# HVRM-T Series (H.264)

## 16/ 8/ 4 Channel Digital Video Recorder



HVRM Series supports 16 analog video channels. Video, Audio, and Text Event-Logs are digitized and stored on 2 SATA hard-drives. Using advanced H.264 Compression, average file size is 3-6KB while still maintaining enough clarity for facial-recognition. Due to our H.264 video compression, HVRM series processes video into crisp, clear, 720x480 resolution (Full D1) up to 30 frames per second.

<b>Order Information</b>	HVRM-T1600M HVRM-T800M HVRM-T400M
<b>Certificate</b>	FCC, CE, MIC, RoHS
<b>Dimension(in)</b>	16(W)x14(D)x4(H) Inch
<b>Shipping Weight</b>	15 lbs.
<b>Unit per ctn</b>	1 pcs

### Key Features

- 16 channel Stand-alone DVR with H.264
- 16 Channel Max. 120fps recording with (Full D1) resolution (7.5fps per channel)
- Adjustable resolution (CIF, 2CIF, 4CIF/D1) and frame rate per channel
- USB Mouse Control Support for GUI
- Max of 2 internal SATA HDDs can be installed
- Support external storage via eSATA
- Storage any SATA HDD size available
- Up to 4ch audio inputs for recording and 1ch output for two-way audio
- Built-in 2 BNC Monitor outputs (1 Main 1/4/9/16ch output and 1 Spot-Out)
- Built-in multiplexer for 16ch live monitoring and playback (1/4/9/16ch mode)
- Built-in DVD Writer, USB and eSATA port for data backup
- Support for iPhone \*(coming soon)
- PTZ control (support preset) via RS485
- Support static and dynamic IP for xDSL, Cable-modem
- Support IR remote controller and external keyboard/joystick via RS485 / 232
- Remote monitoring software to 512 different sites (Control Center Software)
- Built-in Web Server for Web Browser viewing and playback
- Supports NTP (Network Time Protocol) for time synchronization
- Supports HDD Raid 0-Stripe/1-Mirroring

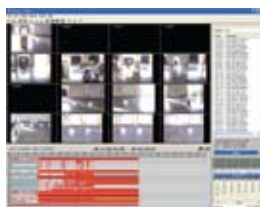
## Control Center Software



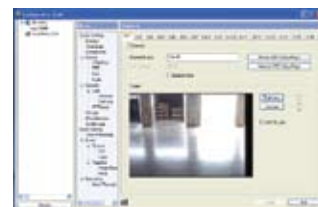
Control center



Mapping feature



Playback



Configuration tool

- Dual Monitor support
- Support Max 128ch simultaneous monitoring (when using dual monitor)
- Various screen division (1/4/9/16/25/36/49/64)
- Alarm Pop up and Sequential switch monitor
- Support DirectX Display (Full screen display available)
- View Set mode (Group and Map mode for management of each channel)
- Recording (.re3)
- Supports Windows Mobile for PDAs and Smartphones
- 512 Site
- Instant Recording (.re3)
- Image Export (Saving the recorded image in bitmap or jpg)
- 2-Way Audio
- On Screen PTZ Control
- Event history Log & Status Panel
- Event Log Search Utility (Searching for relevant image)
- Surveillance Mode
- Map Mode
- Text search

# HVRM-T Series (H.264)

## 16/ 8/ 4 Channel Digital Video Recorder

### SPECIFICATIONS

ITEM	HVRM-T1600M	HVRM-T800M	HVRM-T400M
Operating System	Embedded Linux	Embedded Linux	Embedded Linux
Video Input (BNC, 1Vp-p)	16	8	4
Video Output	1 BNC Main, 1 BNC Spot, 1 DVI	1 BNC Main, 1 BNC Spot, 1 DVI	1 BNC Main, 1 BNC Spot, 1 DVI
Loop Out (BNC, 1Vp-p)	16 with Auto-termination	8 with Auto-termination	4 with Auto-termination
Live Displays	1, 4, 9, 16	1, 4, 9	1, 4
Playback Displays	1, 4, 9, 16	1, 4, 9	1, 4
Video Compression	H.264, MJPEG	H.264, MJPEG	H.264, MJPEG
File Size	2-3KB @ (CIF), 13K @ (Full D1)	2-3KB @ (CIF), 13K @ (Full D1)	2-3KB @ (CIF), 13K @ (Full D1)
Live Display Speed	480/400fps (NTSC/PAL)	480/400fps (NTSC/PAL)	480/400fps (NTSC/PAL)
Record Resolution	D1, HALF D1, CIF	D1, HALF D1, CIF	D1, HALF D1, CIF
Record Speed	120fps @ 720x480 (Full D1) 240fps @ 720x240 (Half D1) 480fps @ 360x240 (CIF)	120fps @ 720x480 (Full D1) 240fps @ 720x240 (Half D1)	120fps @ 720x480 (Full D1)
Alarm In/Out(Relay)	16/2	8/2	4/2
Emergency Record Mode	Yes	Yes	Yes
System Control	Key Buttons, Remote Client, IR Remote, HKB-400		
System Control S/W	Control Center, Web Browser	Control Center, Web Browser	Control Center, Web Browser
PTZ control	RS485	RS485	RS485
Video Format	NTSC/PAL	NTSC/PAL	NTSC/PAL
Audio	4ch Input, 1ch Output	4ch Input, 1ch Output	4ch Input, 1ch Output
Display	Brightness, Contrast and Covert Feature	Brightness, Contrast and Covert Feature	Brightness, Contrast and Covert Feature
Camera Title	22 Characters per Channel	22 Characters per Channel	22 Characters per Channel
Recording Mode	Schedule, Event (Pre/Post), Manual (Emergency)		
Recording Quality	5 Levels of Compression Rate/Record Frame Rate Adjustment		
Pre/Post Recording	Pre: 5 sec / Post: 60 sec		
Motion Detection	22x15 NTSC / 22x18 PAL	22x15 NTSC / 22x18 PAL	22x15 NTSC / 22x18 PAL
Search Mode	Date/Time, Event alarm, Text, Smart Search (Motion)		
Playback Modes	Forward, Reverse, Pause, 1x, 2x, 4x, 8x, 16x, 32x, 64x		
Multiplex Function	Simultaneous Live Display, Playback, Record, Remote Monitoring, Remote Playback		
Alarm Notification	Automatic E-mail, Internal Buzzer, Relay-Out, Pop-Up Screen, Network Event		
Support IPFR	Intelligent Power failure recovery		
Watermark	Yes	Yes	Yes
Password Protection	2 Level Password (Admin/User)	2 Level Password (Admin/User)	2 Level Password (Admin/User)
Interface	1 RS-232C, 2 RS-485, 1 Ethernet, 1 USB	1 RS-232C, 2 RS-485, 1 Ethernet, 1 USB	1 RS-232C, 2 RS-485, 1 Ethernet, 1 USB
Storage	2 SATA HDD	2 SATA HDD	2 SATA HDD
eSATA port for storage	Yes	Yes	Yes
Maximum Storage	4TB	4TB	4TB
Storage Extension	eSATA	eSATA	eSATA
Back up	USB, CD-R, DVD-RW, Network, eSATA		
Network	LAN, WAN(xDSL), DHCP, ARP, ICMP, PPPoE, WESP, UDP, TCP/IP, SMTP, FTP		
Remote Client	Control Center Std		
Certification	FCC, CE, MIC, RoHS		
Power	Input: 100-230VAC, 50/60 Hz,	Input: 100-230VAC, 50/60 Hz,	Input: 100-230VAC, 50/60 Hz,
Power Consumption	Max 85W, Average 60W	Max 85W, Average 60W	Max 85W, Average 60W
Operation Temperature	0 °C ~ +40°C	0 °C ~ +40°C	0 °C ~ +40°C
Storage Temperature	-20 °C~ +60°C	-20 °C~ +60°C	-20 °C~ +60°C
Operation Humidity	93% RH Below	93% RH Below	93% RH Below
Storage Humidity	95% RH Below	95% RH Below	95% RH Below
Dimension / Weight	16in(W) x 14in(D) x 5in(H) / 15 lbs	16in(W) x 14in(D) x 4in(H) / 15 lbs	16in(W) x 14in(D) x 4in(H) / 15 lbs

Specifications are Subject to Change without notice.